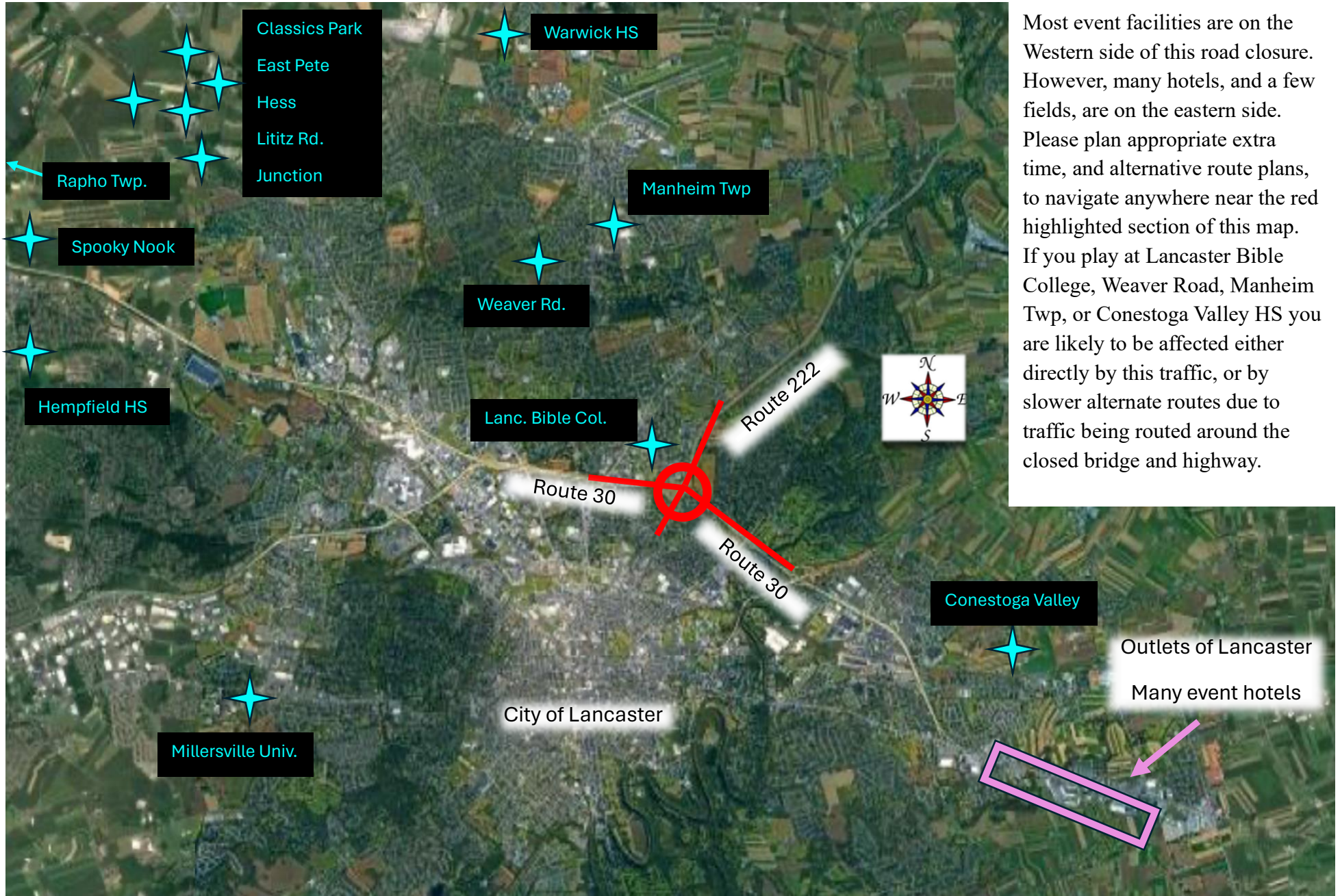


## Route 222 & Route 30 Junction Closure due to Bridge Removal: May 10 to May 13



Most event facilities are on the Western side of this road closure. However, many hotels, and a few fields, are on the eastern side. Please plan appropriate extra time, and alternative route plans, to navigate anywhere near the red highlighted section of this map. If you play at Lancaster Bible College, Weaver Road, Manheim Twp, or Conestoga Valley HS you are likely to be affected either directly by this traffic, or by slower alternate routes due to traffic being routed around the closed bridge and highway.